

The EFE-25 non-metallic diaphragm pump is constructed in **Polypropylene** wetted body, with a Polypropylene centre section.

Capable of offering upto 200 LPM flow rate.

PUMP SPECIFICATIONS

PORT SIZE

- 1" ANSI FLANGE

MAX FREE FLOW ON WATER AT 20°C/68°F

- 200 lpm / 53 USGPM

(on some models 20% reduction should PTFE Diaphragms be fitted)

MAX WORKING PRESSURE @ 20°C/68°F

- 120psi (8.3 bar)

PUMP BODY MIN/MAX WORKING TEMP

- Polypropylene - 2-79°C / 35-175°F

MAX PUMPABLE PARTICLE SIZE

- 3.2mm / 1/8"

AIR INLET PORT SIZE

- 3/4" NPT female

MAX SOUND POWER LEVEL (DBA - ISO 9614-2)

- 79.7 dBA

(at max air inlet pressure - will reduce with air pressure)

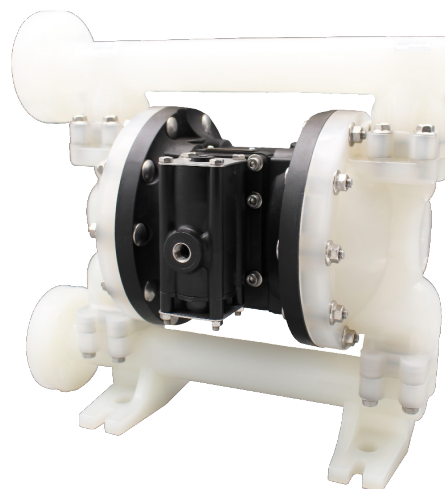
BODY MATERIALS AVAILABLE AND WEIGHT

- Polypropylene - 9.01 kg

DIAPHRAGM & CHECK VALVE

MATERIALS AVAILABLE

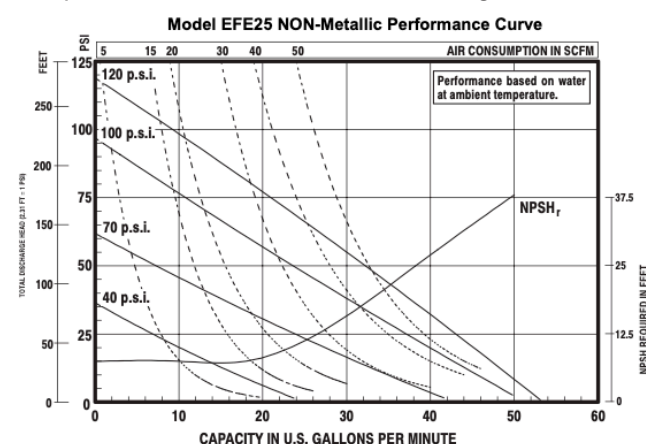
- Santoprene
- Hytrell
- Nitrile
- 316 Stainless Steel
- PTFE
- Viton



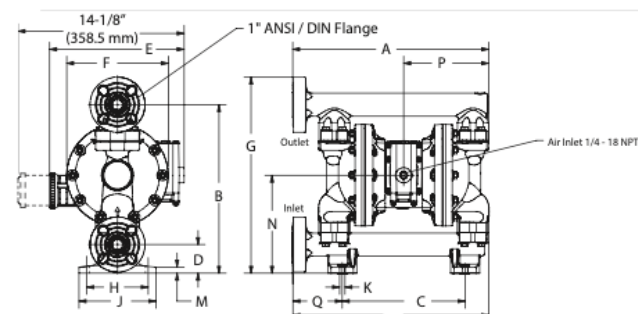
Polypropylene
EFE-25X-PP-XX-XX-XX

PERFORMANCE CURVE

Pump tested in water with inlet submerged



GA DRAWINGS



Port Size	Air Inlet Size	A	B	C	D	E	F	G	H	J	K	L	M	N	P	Q	R	S
		mm	mm	mm	mm	mm	mm	mm	mm	mm	mm	mm	mm	mm	mm	mm	mm	mm
1" BSP(F)	3/4" BSP(F)	361.2	349.8	255.3	59.4	279.5	211.1	376.5	127.6	159.6	11.1	50.8	12.7	203.4	176.6	59.7	364.0	127.6